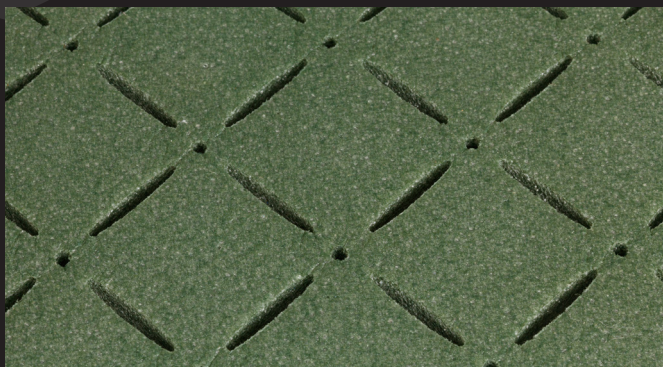


ShockPad

Artificial Grass Subsurface

unreal
GRASS

Shockpad is a polyethylene based foam, designed and tested to provide an impact absorbent subsurface when used in conjunction with artificial grass. It is light weight, incorporates drainage, and can be tailored to the requirements of your installation. Shockpad is supplied in 1.5m x 50m rolls for fast installation (or 1m x 2m tiles for requirements greater than 30mm thick).



Specifications

Properties	Specifications	Unit	Standard
Foam Properties			
Density	30	Kg/m ³	ISO845
Tensile Strength	90.4	KPa	EN12230
Thickness 10mm			
Shock absorption	33.7	%	EN14808
Vertical deformation	6.8	mm	EN14809
Water infiltration rate	12388	mm/h	EN12616
HIC (Critical Fall Value)	0.3	m	EN1177
Thickness 20mm			
Shock absorption	62	%	EN14808
Vertical deformation	15	mm	EN14809
Water infiltration rate	12388	mm/h	EN12616
HIC (Critical Fall Value)	1.32	m	EN1177
Thickness 30mm			
HIC (Critical Fall Value)	1.7	m	EN1177
Thickness 50mm			
HIC (Critical Fall Value)	2.71	m	EN1177

Benefits

- Easy to install due to light weight and large rolls
- Closed cell PE does not absorb water, therefore not affected by wet weather
- Machine cut edges for ease of joining (if required)
- In-built drainage eliminates swelling and shrinking
- Excellent shock absorption and ball rebound
- Will not rot or harbour mould
- Available in various thicknesses, or able to be stacked

*Test certificates available on request.

enquiry@unrealgrass.co.nz

0800 UNREAL (0800 867 325)

www.unrealgrass.co.nz